

ProtegeGX Web Client

Explore the freedom of web based access control

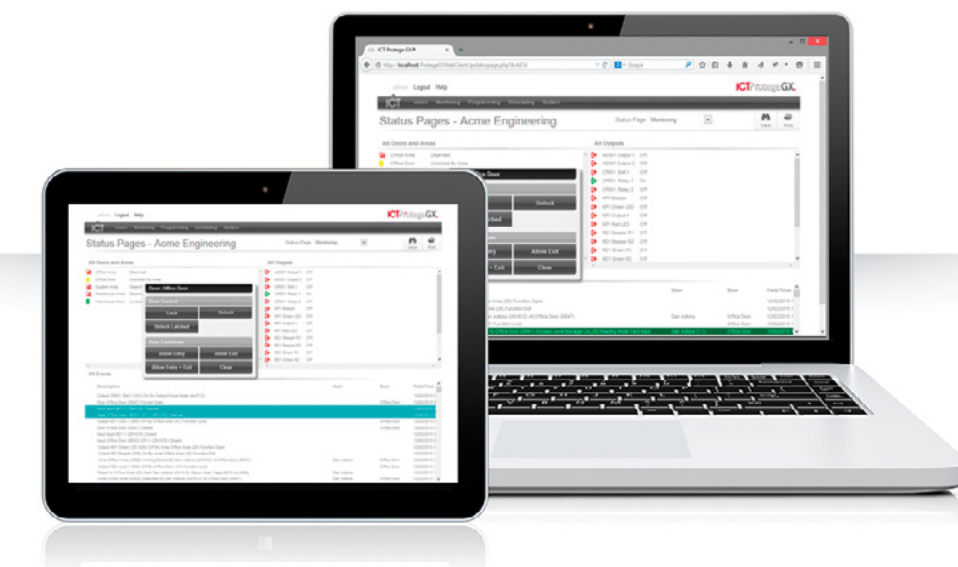


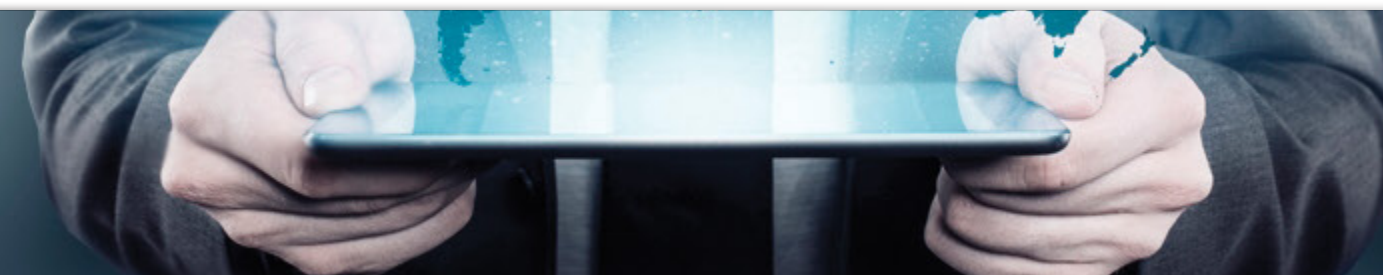
Whether you're an integrator looking to offer a Software as a Service (SaaS) model to your customers, a large corporate business wishing to incorporate ProtegeGX into your intranet, or you need a cost effective solution to manage the security for a multi-tenanted building, the ProtegeGX Web Client has the answer.

0.

Zero software to deploy.

With no software to deploy to end user PCs, the web client provides a truly cross-platform solution that works on any platform and any device with a modern web browser. Wash your hands of dusty old desktop PCs with the freedom to monitor and control your sites from anywhere, at any time - the office, from home, or on the road. That freedom you've been waiting for.





How it Works

The Web Client is an optional licensed module that adds functionality to an existing ProtegeGX system.

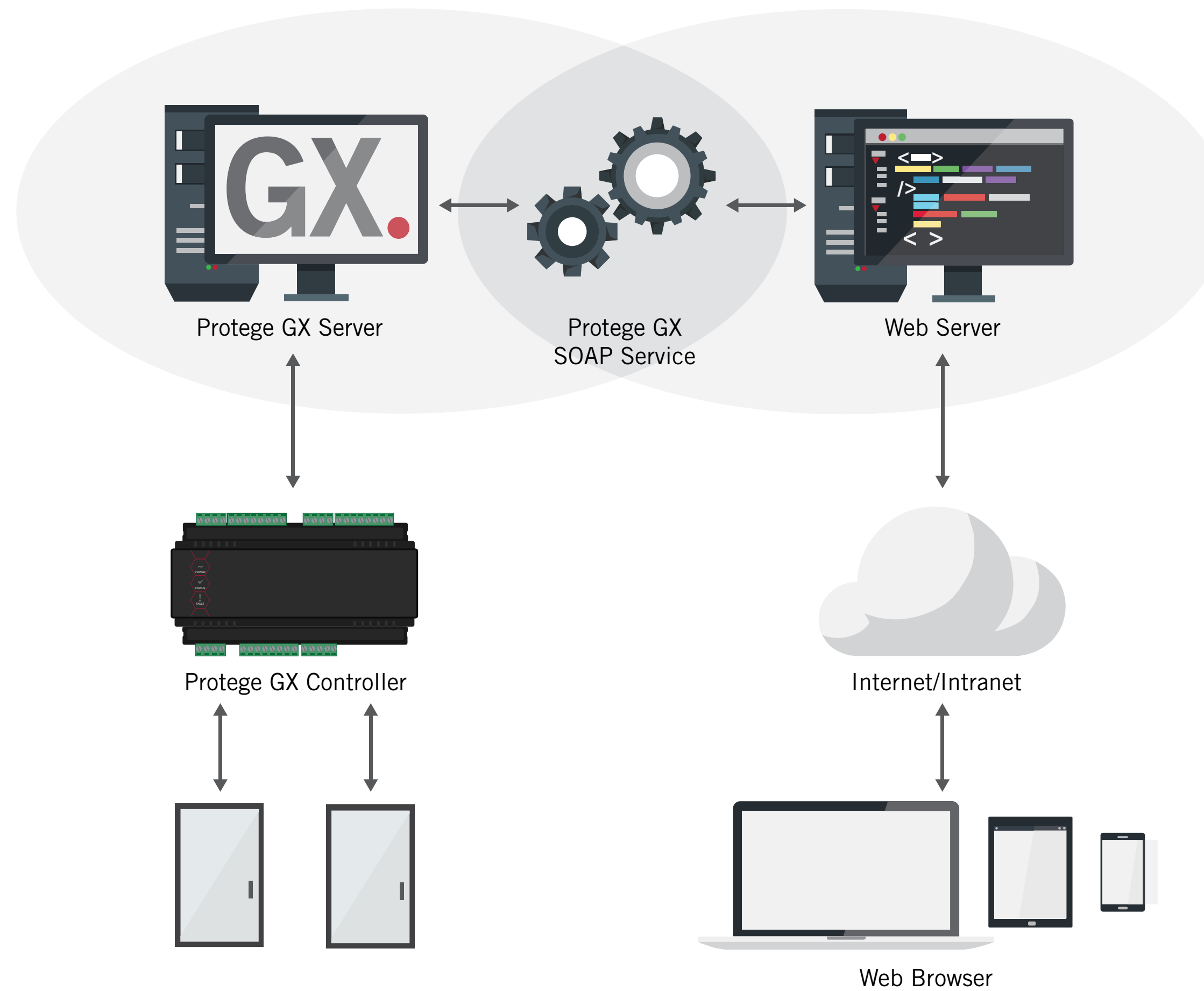
The installation package includes the ProtegeGX Web Client software, the ProtegeGX SOAP Web Service, and 3 Web Operator licenses.

The web client software is installed on the web server and uses the SOAP web service to communicate with the ProtegeGX Server. These components may be installed on the same machine, or on a separate physical server.

Operators connect to the web client using their web browser with each operator requiring a web operator license. These licenses are not concurrent which means that if you have 5 operators wishing to connect at any time, you require 5 web operator licenses.

Order Code

PRT-GX-WEB	Protege GX Web Client
PRT-GX-WEB-OPR	Protege GX Web Operator License



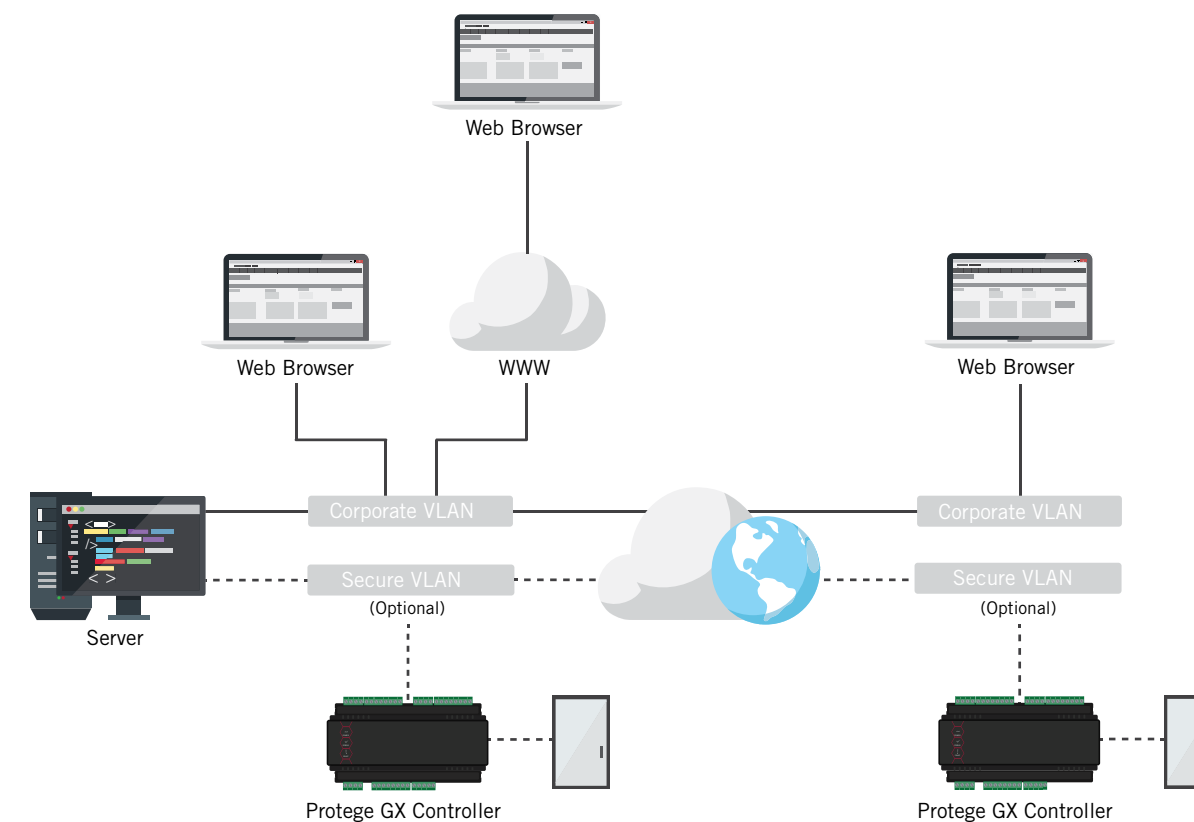
Unified Interface

Businesses can incorporate the web client into their intranet to build a single unified system that controls multiple applications from a single centrally managed location. With no software to deploy, setup and maintenance is kept to a minimum, while allowing the organization to scale usage as fast and as much as required without adding costly infrastructure.

Corporate businesses often have large systems that need to be accessed by multiple operators and require complex security policies to ensure that operators only have access to the information they are authorized to.

By defining the appropriate operators and record groups, corporate users are able to access their branch / division, manage their users, access levels, schedules, and run reports - all via the corporate intranet. If required, the interface can be exposed to the internet to allow access to this information from anywhere.

The security of their networks is also a concern for these businesses. By driving operator access through a web server, the controller, module and server communications can be separated out to a dedicated security network or VLAN and the appropriate network security applied.



Key Advantages:

- No software to deploy to client PCs
- Cross-platform
- Ease of access for end users
- Simple management of complex operator access requirements
- Increased network security



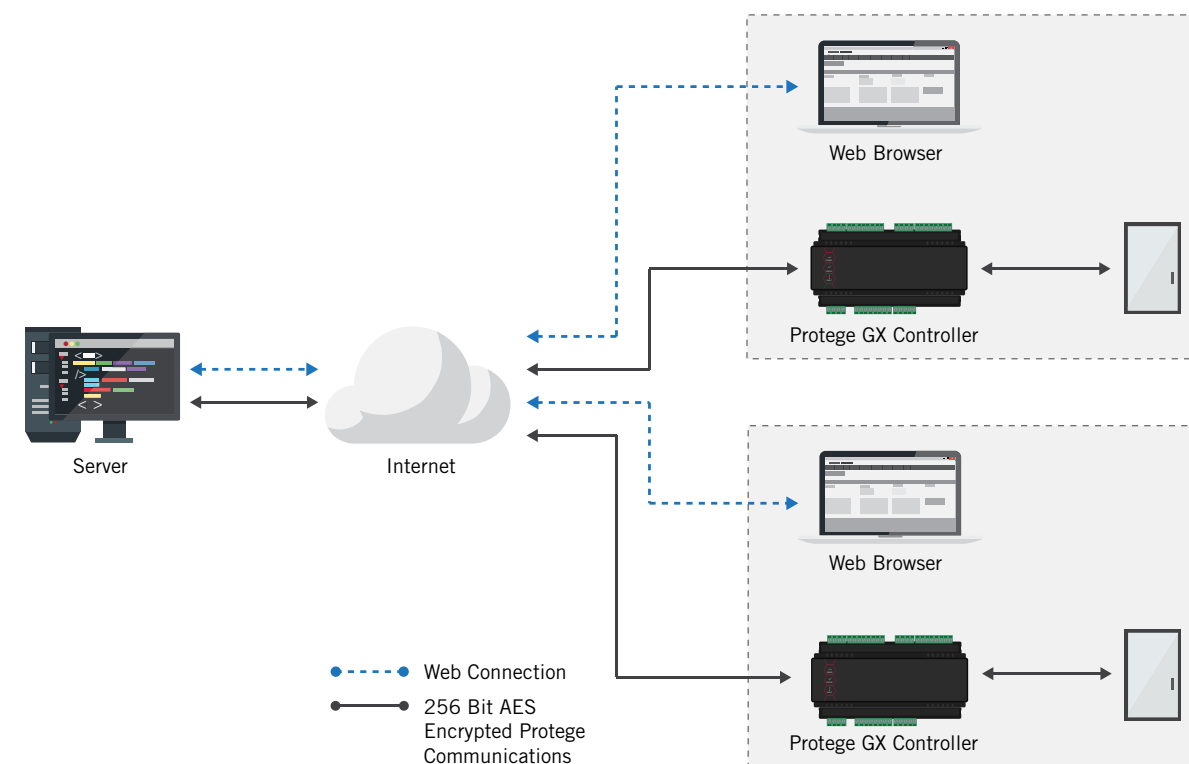
Software as a Service

Integrators can use the web client to provide a Software as a Service (SaaS) model. With the ability to modify stylesheets to conform to corporate branding, and control the elements that are displayed to the end user, it's easy to build an interface tailored to the end user. With no software to install or maintain, and a central point of management, there's more time to focus on other things.

The web client is ideally suited for Integrators wishing to provide a Software as a Service (SaaS) model to their customers. In this scenario, the integrator hosts the ProtegeGX Server and customers connect to this server via the internet, paying the integrator a monthly or annual fee rather than owning their own server.

Controllers are connected to the integrators server via their own internet connection. Connectivity between the controllers and server is protected by 256 bit AES encryption.

The integrator maintains programming via the standard ProtegeGX user interface. The customer accesses their information via the web client which connects to the ProtegeGX Server using their internet connection. End user access is restricted by defining appropriate operators and record groups.



Key Advantages:

- Recurring revenue model for the integrator
- Lower installation cost for the customer as there is no server required
- No software to deploy to end users PCs simplifies maintenance for the integrator
- Easier servicing for technicians with an internet enabled mobile device
- Cross-platform
- Ease of access for end users



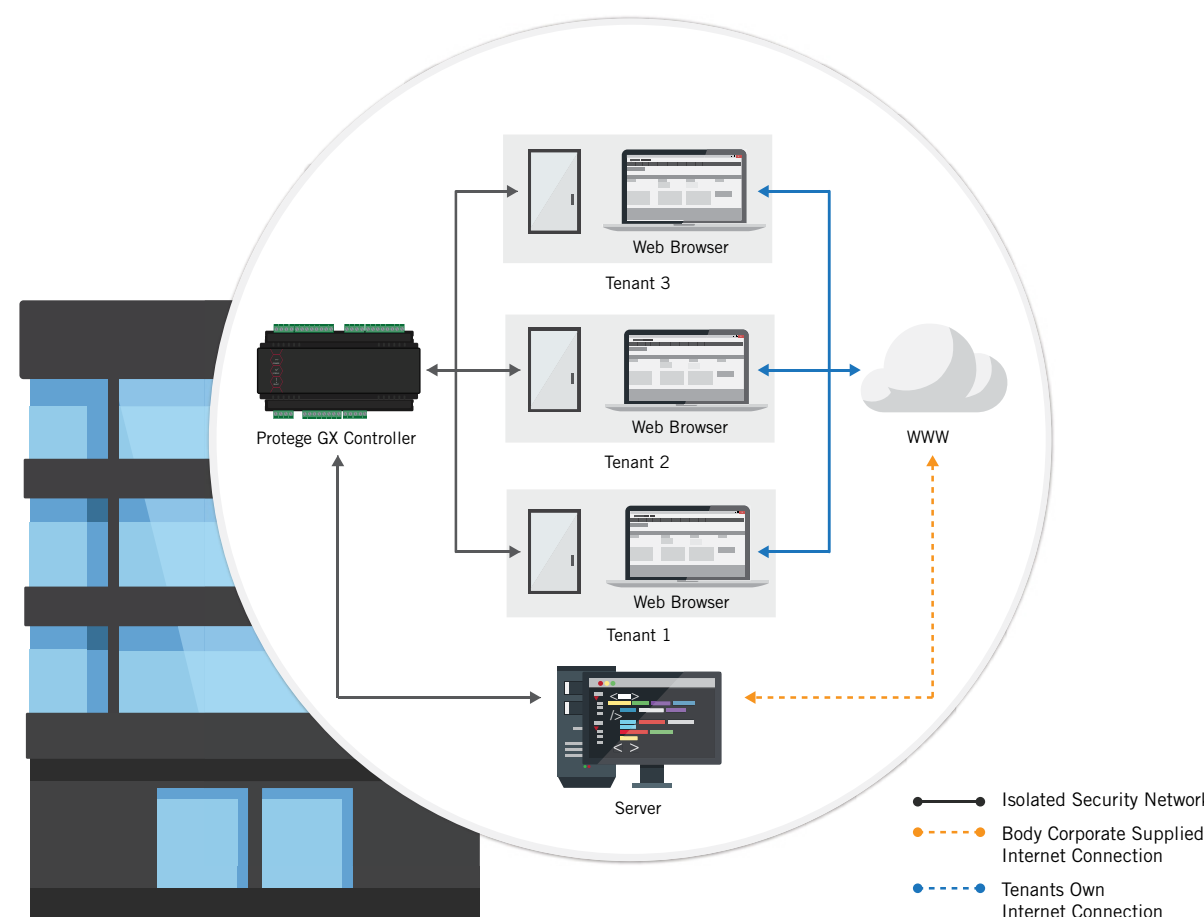
Tenanted Buildings

The web client provides an ideal solution for multi-tenanted buildings where each tenant has their own isolated network and where traditional software would be complicated and expensive to install. The web client uses the tenant's own internet connection, simplifying installation while allowing each tenant to manage and control their users, areas, access levels, and schedules.

Many buildings have multiple tenants who all require the ability to access the security system software to manage and report on their own portion of the system. This can often be difficult and costly to achieve, especially when access to a shared security network is required.

Using the ProtegeGX Web Client, a web interface to the building system can be exposed via a shared internet connection.

This means that the actual ProtegeGX server, controllers, and modules can be isolated to a dedicated security network that is not accessible by the tenants. Tenants simply use their own internet connection to gain access to the building system.



Key Advantages:

- No software to deploy to client PCs
- Simple management of operator access to split systems
- Increased network security
- Easier servicing for technicians with an internet enabled mobile device
- Cross-platform
- Ease of access for end users